

GUESTROOM FURNITURE COLLECTIONS  
FURNISHING SOLUTIONS FROM DESIGN TO INSTALLATION

**TOWNEPLACE  
SUITES®**  
BY MARRIOTT



**X-222-8FT  
SLATWALL KIT**  
6.75"W X 30.5"D X 96"H



**X-222-9FT  
SLATWALL KIT**  
6.75"W X 30.5"D X 108"H



**X-221  
STORAGE CUBBY**  
18"W X 10"D X 41"H



**X-291  
TABLE DINING-DESK**  
60"W X 30"D X 31"H



**X-272L  
DESK**  
55.5"W X 23"D X 49"H



**X-223L  
VANITY**  
36.5"W X 22.5"D X 34"H



**X-224  
COCKTAIL TABLE**  
32"W X 32"D X 20"H



**X-286  
NIGHTSTAND**  
17"W X 15"D X 25"H



**X-289  
CANTILEVERED  
NIGHTSTAND**  
16"W X 15"D X 7"H



**X-226  
TV PANEL**  
32"W X 4"D X 21"H



**X-284S  
24" SMALL TV CABINET**  
24"W X 15"D X 30"H



**X-284  
SMALL TV CABINET**  
40"W X 15"D X 30"H



**X-297  
LARGE TV CABINET**  
72"W X 15"D X 30"H



**X-296  
DRESSER**  
66"W X 20"D X 40"H



**X-281  
DRESSER**  
33"W X 20"D X 40"H

**WE CONSIDER OURSELVES A PARTNER,  
NOT JUST A VENDOR**

You are responsible for cultivating and sustaining a customer relationship by exceeding expectations. To achieve that you need a furniture manufacturer that provides exceptional products that follow strict quality control guidelines. All of our casegoods are built to AWI Premium Certified standards and is in the QPC Certification Program.

**EFFECTIVE TEAMWORK BEGINS AND ENDS  
WITH COMMUNICATION**

With experience in furniture manufacturing since 1974, we know how important it is to have open communication, accurate documentation, and above standard product.

**WE STAND BEHIND OUR CASEGOODS**

Our consumer warranty is our promise to you, the purchaser, that each piece of our furniture is warranted against defects in materials and workmanship {under normal use} for a period of {5} years from the date of delivery.

**WATCH OUR  
MANUFACTURING VIDEO**  
*featuring Marriott TPS product*



ARTONEMFG.COM | 716.664.2232

**ARTONE**  
FURNITURE BY DESIGN

GUESTROOM FURNITURE COLLECTIONS  
FURNISHING SOLUTIONS FROM DESIGN TO INSTALLATION

**TOWNEPLACE  
SUITES®**  
BY MARRIOTT



**K-209L-ACC**  
**ADA KING HEADBOARD**  
109"W X 2"D X 42"H



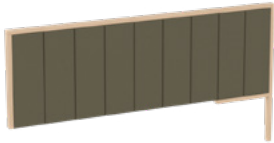
**K-209L**  
**KING HEADBOARD**  
109"W X 2"D X 42"H



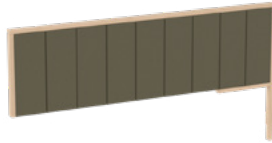
**Q-209-L-ACC**  
**ADA QUEEN HEADBOARD**  
101"W X 2"D X 42"H



**Q-209L**  
**QUEEN HEADBOARD**  
101"W X 2"D X 42"H



**Q-209LS-ACC**  
**QUEEN HEADBOARD  
W/SIDE PANEL**  
84"W X 2"D X 42"H



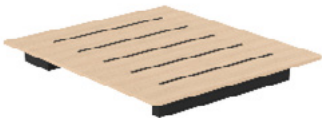
**Q-209-LS**  
**QUEEN HEADBOARD  
W/SIDE PANEL**  
84"W X 2"D X 42"H



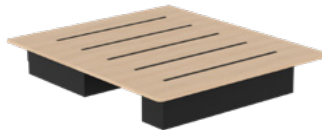
**QQ-209-ACC**  
**ADA DOUBLE QUEEN  
HEADBOARD**  
190"W X 2"D X 28"H



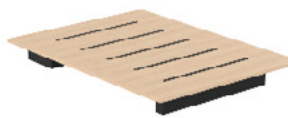
**QQ-209**  
**DOUBLE QUEEN  
HEADBOARD**  
190"W X 2"D X 42"H



**K-211-ACC**  
**ADA KING PLATFORM**  
72"W X 82"D X 9"H



**K-211L**  
**KING PLATFORM**  
72"W X 82"D X 14"H



**Q-211-ACC**  
**ADA QUEEN PLATFORM**  
60"W X 82"D X 9"H



**Q-211L**  
**QUEEN PLATFORM**  
60"W X 82"D X 14"H

**WE CONSIDER OURSELVES A PARTNER,  
NOT JUST A VENDOR**

You are responsible for cultivating and sustaining a customer relationship by exceeding expectations. To achieve that you need a furniture manufacturer that provides exceptional products that follow strict quality control guidelines. All of our casegoods are built to AWI Premium Certified standards and is in the QPC Certification Program.

**EFFECTIVE TEAMWORK BEGINS AND ENDS  
WITH COMMUNICATION**

With experience in furniture manufacturing since 1974, we know how important it is to have open communication, accurate documentation, and above standard product.

**WE STAND BEHIND OUR CASEGOODS**

Our consumer warranty is our promise to you, the purchaser, that each piece of our furniture is warranted against defects in materials and workmanship {under normal use} for a period of {5} years from the date of delivery.

**WATCH OUR  
MANUFACTURING VIDEO**  
*featuring Marriott TPS product*



ARTONEMFG.COM | 716.664.2232

**ARTONE**  
FURNITURE BY DESIGN